



Sandwich Maker

User Manual



SWM 2971 B

EN / DE / FR / TR / ES / PL / IT / RO / SR / AR



01M-8819053200-3022-04

CONTENTS

ENGLISH	6-15
---------	------

DEUTSCH	16-28
---------	-------

FRANÇAIS	29-40
----------	-------

TÜRKÇE	41-53
--------	-------

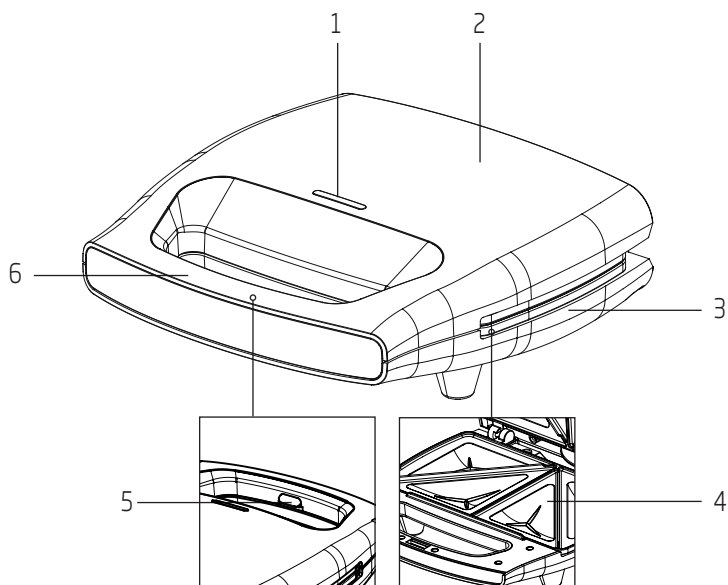
ESPAÑOL	54-65
---------	-------

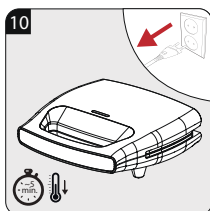
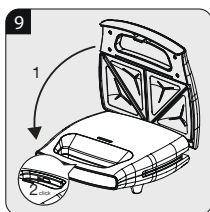
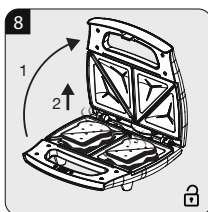
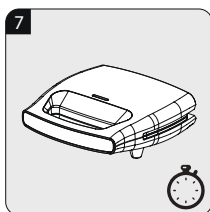
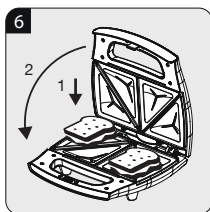
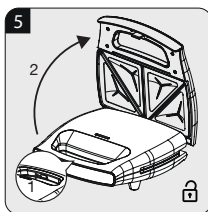
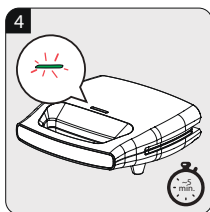
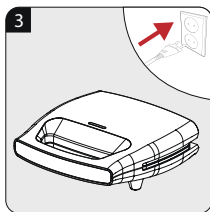
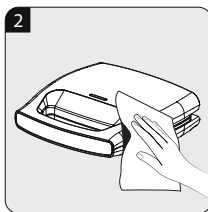
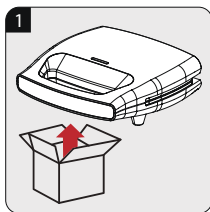
POLSKI	66-77
--------	-------

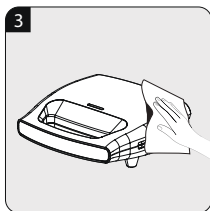
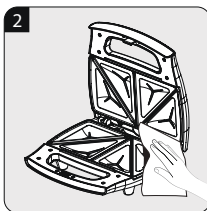
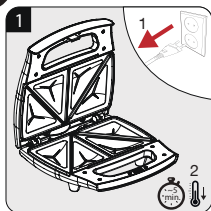
ITALIANO	78-89
----------	-------

ROMÂNĂ	90-103
--------	--------

СРПСКИ	104-112
--------	---------







EN	OPERATION	CLEANING AND CARE
DE	BETRIEB	REINIGUNG UND PFLEGE
FR	FONCTIONNEMENT	NETTOYAGE ET ENTRETIEN
TR	KULLANIM	TEMİZLEME VE BAKIM
ES	FUNCIONAMIENTO	LIMPIEZA Y CUIDADOS
PL	OBŚŁUGA	CZYSZCZENIE I KONSERWACJA
IT	UTILIZZO	PULIZIA E CURA
SR	ИСПОЛЬЗОВАНИЕ	ОЧИСТКА И УХОД
RO	UTILIZARE	CURĂ AREA ȘI ÎNGRIJIREA
AR	التشغيل	التنظيف والعناية

Please read this manual first!

Dear Valued Customer,
Thank you for preferring this Beko appliance. We hope that you get the best results from your appliance which has been manufactured with high quality and state-of-the-art technology. For this reason, please read this user manual and all other provided documents carefully before using the appliance and keep it as a reference for future use. If you hand over the appliance to someone else, give the user manual as well. Follow the instructions by paying attention to all the information and warnings in the user manual.

Meanings of the symbols

Following symbols are used in various sections of this manual:



Important information and useful hints about usage.



WARNING: Warnings for dangerous situations concerning the safety of life and property.



Suitable for contact with food.



Do not immerse the appliance in water.



**RECYCLED &
RECYCLABLE
PAPER**

1. Thermostat light
2. Upper body
3. Lower body
4. Cooking plates
5. Lock button
6. Handle

Technical data

Power supply:

220-240 V ~, 50-60 Hz

Power: 650-750 W

Rights to make technical and design changes are reserved.

The values which are declared in the markings affixed on your appliance or other printed documents supplied with it represent the values which were obtained in the laboratories pursuant to the pertinent standards. These values may vary according to the usage of the appliance and ambient conditions.

This section contains safety instructions that will help protect from risk of personal injury or property damage.

Failure to follow these instructions shall void any warranty.

1.1 General safety

- This product complies with international safety standards.
- The product can be used by children at and above 8 years old and by persons who have reduced physical, sensory or mental abilities or by persons who have no knowledge or experience on the condition that they are supervised or informed about the dangers involved. Children must not play with the product.
- Cleaning and maintenance works should not be performed by children unless they are supervised by an adult.
- Keep the appliance and its cable away from the reach of children who are younger than 8.

Important instructions for safety and environment

- Do not use the product if the power cable or the product itself is damaged. Contact authorised service.
- Your mains power supply must comply with the values on the type plate of the product.
- For additional protection, this product must be connected to a residual current device with a rated value of 30 mA.
- Connect the appliance to a grounded socket.
- Do not use it with an extension cable.
- In order to prevent the power cable from getting damaged, make sure that it doesn't get stuck, twisted or rub against sharp surfaces.
- Do not touch the plug when your hands are damp or wet.
- Do not immerse the appliance or its power cable in water.
- Do not leave the appliance unattended when it is connected to the mains.
- The outer surface heats during use. Do not touch hot surfaces to prevent the risk of burning.

- Do not leave metal cooking utensils or objects on the cooking plates.
- Use and keep the appliance on a stable surface.
- Do not disassemble the appliance.
- Only use original parts or parts recommended by the manufacturer.
- Unplug the appliance before cleaning and dry all parts thoroughly after cleaning.
- Clean only the outer surface and the plates as described in Cleaning and Care.
- This appliance is not intended for commercial use. It is intended for use in household applications and alike in places such as:
 - Shops, offices and personnel kitchens in other working environments,
 - Farmhouses,
 - By customers in hotels, motels and other residential places,
 - Places for sleep and breakfast.

- The appliance should not be operated with an external clock timer or separate remote control system.
- Food may catch fire due to overheating. Do not allow the appliance to get in contact or be covered with flammable items such as curtains, fabric, wall panels and etc.
- Never use the appliance in or near places where combustible or inflammable ambience or places are present.
- If you keep the packaging materials, store them out of the reach of children.
- Remove all packaging and sticker materials and dispose of them according to the applicable legal regulations.
- If the supply cord is damaged, it must be replaced by the manufacturer, its service agent or similarly qualified persons in order to avoid a hazard.

1.2 Compliance with the WEEE Directive and disposal of the waste product



This product complies with EU WEEE Directive (2012/19/EU). This product bears a classification symbol for waste electrical and electronic equipment (WEEE).

This symbol indicates that this product shall not be disposed with other household wastes at the end of its service life. Used device must be returned to official collection point for recycling of electrical and electronic devices. To find these collection systems please contact to your local authorities or retailer where the product was purchased. Each household performs important role in recovering and recycling of old appliance. Appropriate disposal of used appliance helps prevent potential negative consequences for the environment and human health.

1.3 Compliance with RoHS Directive

The product you have purchased complies with EU RoHS Directive (2011/65/EU). It does not contain harmful and prohibited materials specified in the Directive.

1.4 Package information



Package of the product is made of recyclable materials in accordance with our national legislation. Do not dispose of the packaging materials together with the domestic or other wastes. Take them to the packaging material collection points designated by the local authorities.

2 Use

2.1 Intended use

This appliance is intended only for household use and cooking; it is not suitable for professional use.

2.2 First use

Since smoke may be emitted during first use, operate the product with no load and make sure that the room is well-ventilated.



- The yellow light turn on with heating up. After the unit has heated up for about five minutes, the indicator light will turn green, indicating that the product is ready to be used.
- The cooking time for different foods depends on the type and thickness of the foods.



Warning

- Do not use this product to cook or defrost frozen food. Food need to be defrosted before being cooked with this product.
- The cooking plates and metal surfaces of the product over-heat during use.
- Do not use kitchen utensils that might scratch or damage the non-stick coating of the plate.

3 Cleaning and care

3.1 Cleaning



Never let electrical parts contact water or get damp.



- Dry all parts with a soft towel before starting to use the appliance after cleaning it.
- Clean the appliance after each to have it well-kept.

Warning



- White water stains may form on the cooking plates if left wet.
- Never use gasoline, solvent, abrasive cleaning agents, metal objects or hard brushes to clean the appliance.
- It is recommended to clean the cooking plates after they have cooled down after each cooking process in order to facilitate cleaning.

3.2 Storage

- Unplug the appliance and let it cool down before storing it.
- Hold the lid from the handle (6) to close.
- If you do not intend to use the appliance for a long time, store it carefully.
- You can store the appliance in the upright position as well.
- Store the appliance in a cool and dry place.
- Keep the appliance and its power cable out of the reach of children.

3 Cleaning and care

3.3 Handling and transportation

- During handling and transportation, carry the appliance in its original packaging. The packaging of the appliance protects it against physical damages.
- Do not place heavy loads on the appliance or on the packaging. The appliance may be damaged.
- Dropping the appliance may render it non-operational or cause permanent damage.